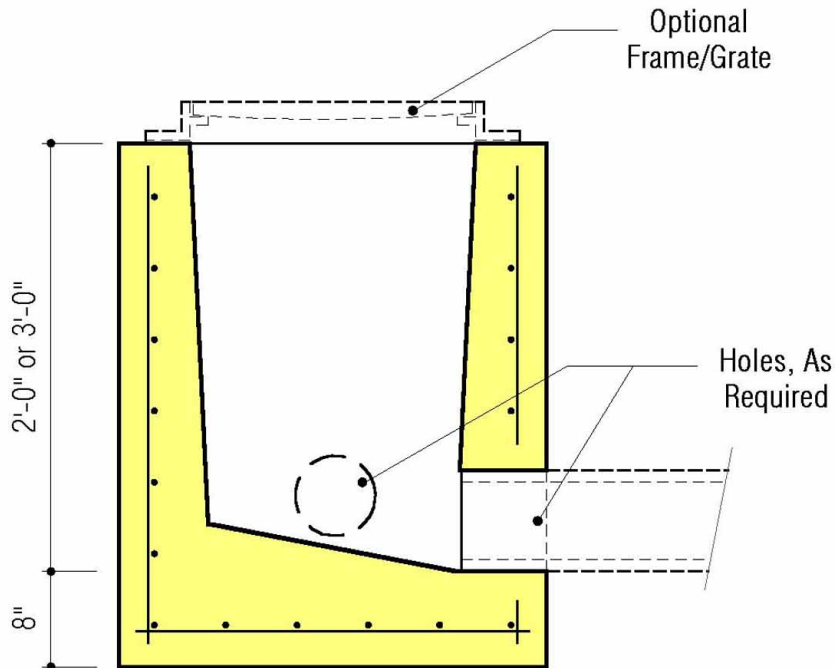


PLAN VIEW



SECTION A-A

DESIGN DATA & GENERAL NOTES

- [1] Concrete strength $f'_c = 4,500$ p.s.i. @ 28 days. Density = 150 pcf.
- [2] Cement - Portland Type I/II per ASTM C 150-92.
- [3] Admixtures & plasticizers per ASTM C 260-86 & C 494-92.
- [4] Reinforcing per ASTM A615, Grade 60, domestic. Min. 1-1/2" cover.



Mayer Bros., Inc.

6264 Race Road
Elkridge, Maryland 21075
Tel. 410.796.1434
Fax. 410.796.1438

www.mayerbrosprecast.com

STANDARD YARD INLET
Heavy-Duty

Non-Stock Item [Made-To-Order]

Dwg. No. YI

No Scale

January 2000