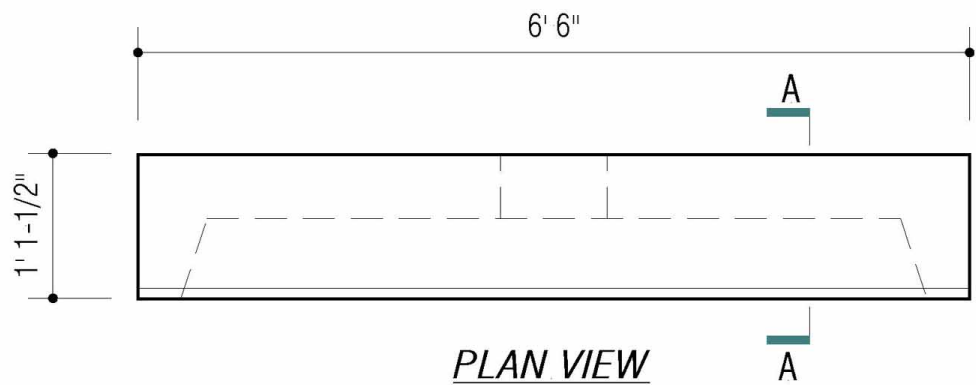
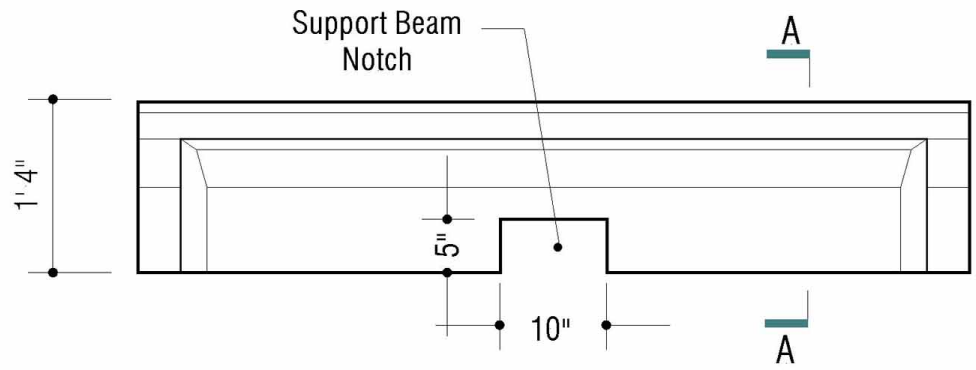


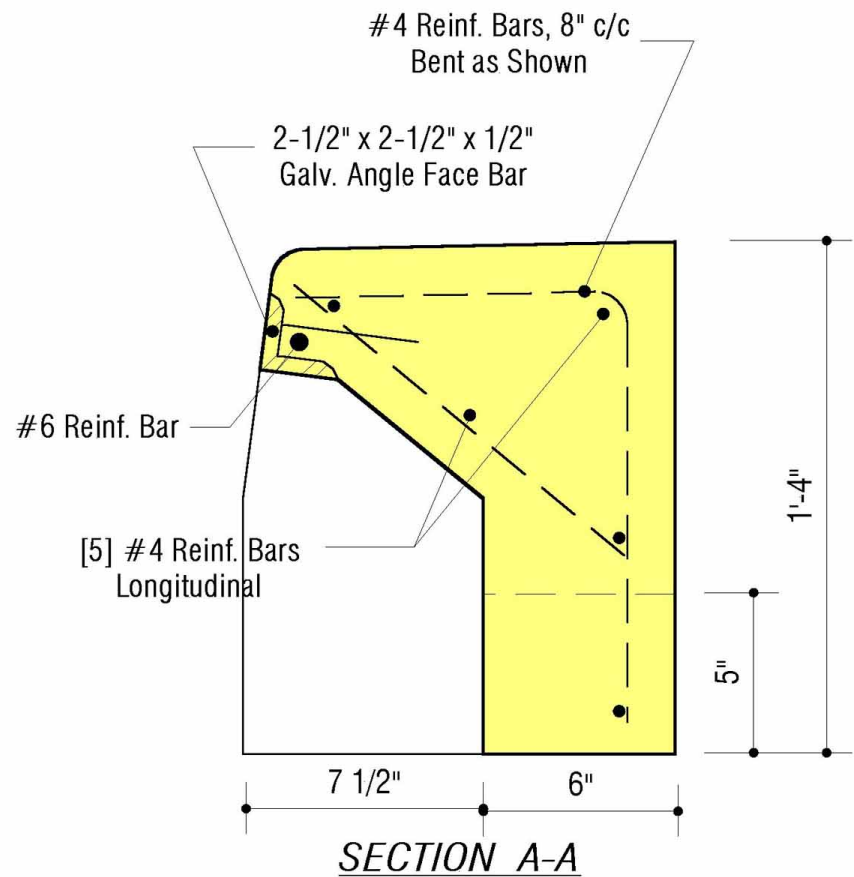
COMPLIES WITH:  
SHA MD-374.71



PLAN VIEW



FRONT ELEVATION



SECTION A-A

**MBI**  
Mayer Bros., Inc.

6264 Race Road  
Elkridge, Maryland 21075  
Tel. 410.796.1434  
Fax. 410.796.1438

www.mayerbrosprecast.com

TYPE "SS" CURB HEADPIECE  
[For Precast Inlet]  
Stock Item

Dwg.# SS-PRE

No Scale

Jan. 1, 2000

DESIGN DATA & GENERAL NOTES

- [1] Concrete strength  $f'_c = 4,500$  p.s.i. @ 28 days. Density = 150 pcf.
- [2] Cement - Portland Type I/II per ASTM C 150-92.
- [3] Admixtures per ASTM C 260-86 & C 494-92.
- [4] Reinforcing per ASTM A615, Grade 60, domestic. Min 1-1/2" cover.
- [5] Light broom finish @ top of headpiece.
- [6] Face angle shall be galvanized prior to product fabrication.