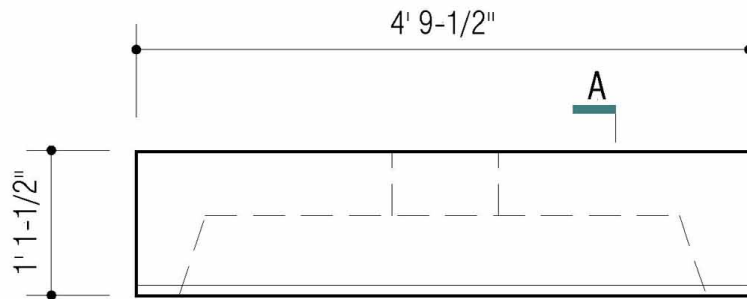
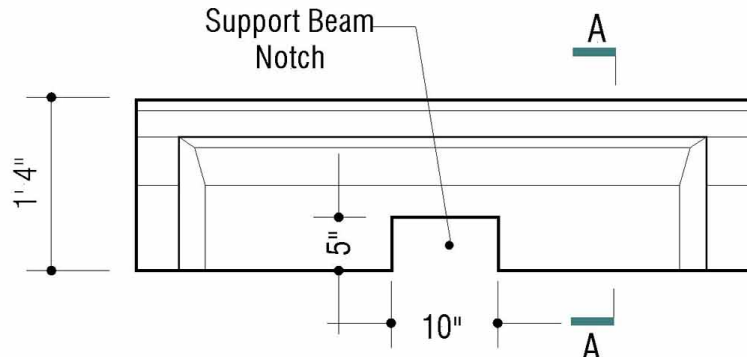


**COMPLIES WITH:**

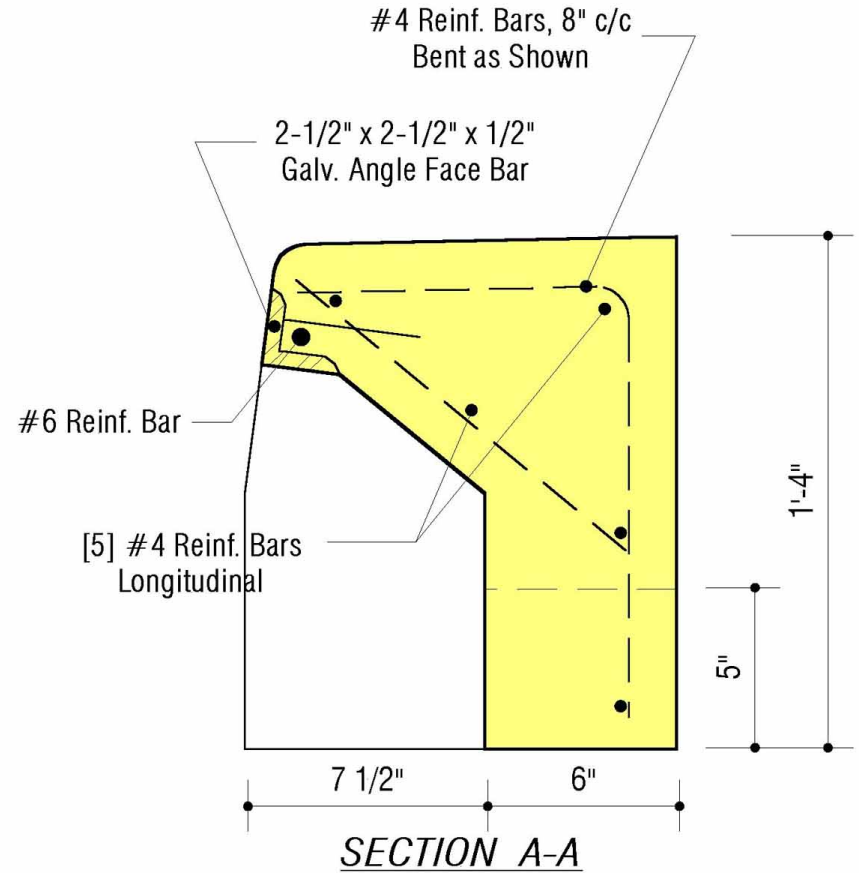
Anne Arundel Co. D-36  
 Baltimore Co. D-2.30  
 Howard Co. SD 4.38  
 SHA MD-374.24



**PLAN VIEW**



**FRONT ELEVATION**



**SECTION A-A**



6264 Race Road  
 Elkridge, Maryland 21075  
 Tel. 410.796.1434  
 Fax. 410.796.1438

[www.mayerbrosprecast.com](http://www.mayerbrosprecast.com)

**TYPE "N/R" CURB HEADPIECE**  
**[For Precast Inlet]**  
 Stock Item

Dwg.# N/R-PRE

No Scale

Jan. 1, 2000

**DESIGN DATA & GENERAL NOTES**

- [1] Concrete strength  $f'_c = 4,500$  p.s.i. @ 28 days. Density = 150 pcf.
- [2] Cement - Portland Type I/II per ASTM C 150-92.
- [3] Admixtures per ASTM C 260-86 & C 494-92.
- [4] Reinforcing per ASTM A615, Grade 60, domestic. Min 1-1/2" cover.
- [5] Light broom finish @ top of headpiece.
- [6] Face angle shall be galvanized prior to product fabrication.