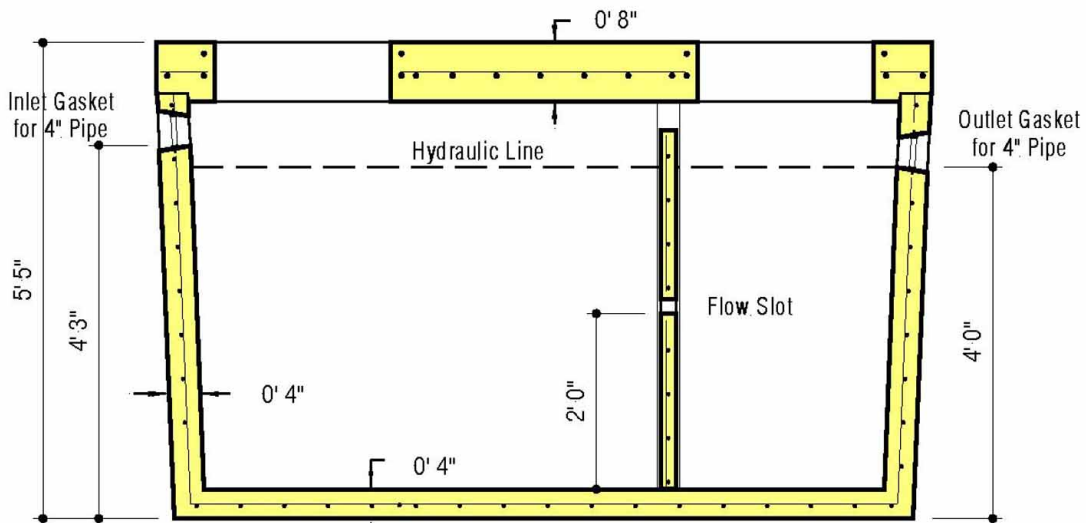


PLAN VIEW



SECTION A-A

DESIGN DATA & GENERAL NOTES

- [1] Concrete strength $f'_c = 4,000$ p.s.i. @ 28 days. Density = 150 pcf.
- [2] Cement - Portland Type I/II per ASTM C 150-92.
- [3] Admixtures & plasticizers per ASTM C 260-86 & C 494-92.
- [4] Reinforcing per ASTM A185. Min. 1-1/2" cover.
- [5] Top slab sealed with butyl rope mastic.
- [6] Maximum 5'-0" of earth cover over top slab.
- [7] 4" Walls & Base, 8" Top Slab



Mayer Bros., Inc.

6264 Race Road
Elkridge, Maryland 21075
Tel. 410.796.1434
Fax. 410.796.1438

www.mayerbrosprecast.com

1,000 GALLON TANK
Heavy-Traffic Rated - H2O

Stock Item [Approx. Wt. - 14,500 lbs.]

Dwg. No. 1000TR2

No Scale

August 9, 2001