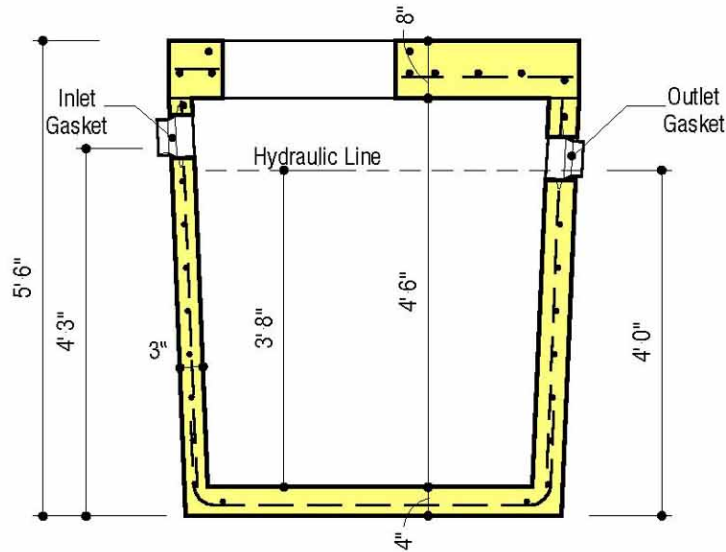


PLAN VIEW



SECTION VIEW

DESIGN DATA & GENERAL NOTES

- [1] Concrete strength $f'_c = 4,500$ p.s.i. @ 28 days. Density = 150 pcf.
- [2] Cement - Portland Type I/II per ASTM C 150-92.
- [3] Admixtures & plasticizers per ASTM C 260-86 & C 494-92.
- [4] Reinforcing per ASTM A615, Grade 60, domestic. Min. 1" cover.
- [5] Walls, base, & top slab designed for HS-20 loading per Engineer's calculations.
- [6] Top slab sealed with butyl rope mastic.

MBI

Mayer Bros., Inc.

6264 Race Road
Elkridge, Maryland 21075
Tel. 410.796.1434
Fax. 410.796.1438

www.mayerbrosprecast.com

500 GALLON TANK
Heavy Traffic Rated

Stock Item [Approx. Wt. - 7,000 lbs.]

Dwg. No. 500Traf

No Scale

Jan. 1, 2000